

SUBARU WRX 22+ BLOW OFF VALVE

TOOLS REQUIRED

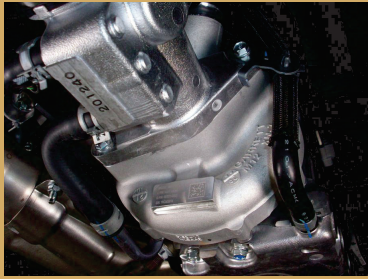
M12 socket
T30 Torx bit
5 MM allen wrench
Flat screw driver

MATERIALS REQUIRED

<p>1</p> <p>Remove the clips holding under tray in the right wheel well.</p>	<p>2</p> <p>Remove the clips holding under tray in the left wheel well.</p>	<p>3</p> <p>Remove the bolts and the clips holding under tray from the bottom. Remove the under tray.</p>	<p>4</p> <p>Remove the skid plate.</p>
			
<p>5</p> <p>Pull the spring clip and disconnect the return hose.</p>	<p>6</p> <p>Disconnect the vent hose.</p>	<p>7</p> <p>Remove the turbo inlet.</p>	<p>8</p> <p>Disconnect the wire harness.</p>
			
<p>9</p> <p>Remove the blow off valve.</p>	<p>10</p> <p>Prepare the Boomba Racing Blow Off Valve Adaptor for installation. Use provided set screws to adjust BOV's sound level.</p>	<p>11</p> <p>Line up the blow off valve with the adaptor. Insert the provided screws.</p>	<p>12</p> <p>Install the blow off valve with the adaptor and secure it to the turbo housing. Connect the wire harness.</p>
			

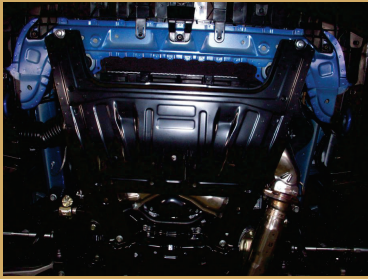
13

Reinstall the turbo inlet.



14

Install the skid plate.



15

Install the under tray.

